

# TELEVISION

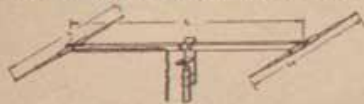
## New Lafayette Television Tubes NEW 7 Inch SIZE!



An amazing new Cathode-Ray Television Tube that directly replaces the ordinary 5 inch tube yet produces a picture that has **more than twice the area** of the regular 5 inch type. 5 inch tubes ordinarily have a picture size 3x4" whereas this new Lafayette 7 inch tube provides a picture 4½ by 5½". Its technical characteristics are: Heater Voltage A.C. or D.C.—6.3; Heater Current—6 amps.; Overall length—16½" (±½"); Max. diameter—7¼"; Base—large Magnal 11 pin; Fluorescent Screen—white; Picture Detail greater than 441 lines; Maximum anode voltage (anode #2)—3000 volts.

- Special 7 Inch. Your Cost \$25.00**
- Five Inch—Type 1802—Standard type 16¼" (¾") long tube. Electrostatic deflection. Your Cost \$23.75**
- Five Inch Stubby—Type 1805—Same as above but shorter. Only 13¼" long. Electro-static deflection. Your Cost \$23.75**
- Nine Inch—Type 1804—Electromagnetic deflection. Each \$54.00**
- Twelve Inch—Type 1803—Electromagnetic deflection. Each \$67.50**

## TACO Television Antenna



A well designed, highly efficient antenna system for the reception of television signals. The complete system consists of both antenna and reflector rods together with suitable mounting brackets, cross arm and 60 ft. transmission line. For the very best results it is recommended that both reflector and antenna be used. However, where the signals are strong enough, and where no reflection of signals from nearby buildings, etc. are experienced good results can be obtained without using the reflector.

- K21830—TACO Television Antenna. Consists of Antenna Rod, swivel and 60 ft. transmission line (no reflector). Shpg. wt. 5 lbs. \$4.41 Your Cost**
- K21845—TACO Reflector Rod complete with wooden cross arm. Shpg. wt. 5 lbs. \$4.41 Your Cost**
- Note: The two units listed above make up the complete antenna system as illustrated.**
- K21845—TACO Reflector Rod only. No cross-arm. Shpg. wt. 5 lbs. \$3.09 Your Cost**



## BRACH

### Television Antenna

Designed for simple and quick installation on any roof. Consists of: clear Washington Cedar cross arms and 2 section mast; teleceptor rods; climate sealed teleceptor coupler assembled to 75 ft. of low-loss transmission line; porcelain insulators; mounting clamps; hardware, and full instructions. This antenna is highly recommended and is supplied as standard equipment by some manufacturers of television receivers. Shpg. wt. 9½ lbs.

- K21831—List \$9.50 Your Cost \$5.58**

### Magnal or Television Socket

Standard socket used for television tubes. Accommodates up to 11 contacts. Top diameter 1½". Mounts in hexagon hole measuring 1¼" across flats. Supplied with press-on mounting rings. Adaptable to panels from ¼" to ½" thick.

- K13089—Your Cost \$27**

### LOOK & LISTEN by M. B. Sleeper



Up-to-the-second information from confidential sources for Set Builders, Experimenters, Students and Servicemen. As new as the Empire State & Chrysler Building transmitters. Over 100 illustrations. 96 pages.

- K19743—Your Cost \$98**



## TELCON Television Transmission Cables

TELCON Products enjoy a world-wide reputation for quality which they have earned over a period of 80 years. In that time they have produced nearly 80 per cent of the whole world's output of submarine cables. All of their products are submitted to the same rigorous inspection and control that have earned such an enviable reputation for the company throughout the world.

Among the many types of high frequency (co-axial) cables made by this company are two that merit special attention for their high efficiency and ease of manipulation. These cables (illustrated above) have molded in "fins" to support the wire and are covered with Telconax a patented composition that has a high resistance to chemicals, ozone, sunlight, etc. Especially valuable in coastal towns and in manufacturing centers.

- Single Conductor (A.S.5C.)** Concentric cable with a characteristic impedance of 100 ohms. Attenuation in db./100 ft. @ 1 Mc.—2; @ 44 Mc.—3. **K29539—Per Foot 21¢**
- Twin Conductor (A.S.12C.)** Has a characteristic impedance of 200 ohms. Attenuation, db./100 ft. @ 1 Mc.—22; @ 44 Mc.—33. **K20940—Your Cost Per Foot 35¢**

## Meissner TELEVISION COMPONENTS

Same components used in complete Meissner Kit described on next page. Offered to the engineer and experimenter for use in further research and experiment.

### R.F. Coil Assembly



Includes entire R.F. assembly for the television receiver. Consists of 4 position rotary switch and 2 4-winding coils and trimmers. Each coil includes antenna primary, pre-selector, R.F. input and oscillator windings inductively coupled on same form. One coil for 44-50 Mc. band other for 50-56 Mc. band—both preset at factory. Two other positions on band switch for future expansion when other channels are assigned. List \$12.50

- K10720—Your Cost \$7.35**

### Video IF Transformers

Designed for maximum permissible gain. Band width using all three approx. 3 Mc. Permeability tuned. 1½"x2½"x1½" high.

- K10721—1st. Video I.F. \$2.06**  
**K10722—2nd. Video I.F.**  
**K10723—3rd. Video I.F.**  
**Your Cost Each**  
**Any Type**

### Sound IF Transformer

Same size and appearance as above units. Operates at 8.5 Mc. Ferrocort tuned.

- K10724—Your Cost \$2.06**

### Sound Trap

Tuned to 14.25 Mc. to remove sound portion of next higher adjacent channel which might cause interference. Capacity coupled to first picture (video) I.F. stage. 1½" square by 1½" high.

- K10725—Your Cost \$1.47**

### Shielded IF Choke

Used between "Clipper" and synchronizing amplifier tube. Passes 13 Kc. and 60 cycles but stops I.F. frequency.

- K10726—Your Cost \$59**

### Sound IF Grid Coil

Tuned to 8.25 Mc. by adjustable iron core. Connects from grid of sound I.F. tube to AVC.

- K10727—Your Cost \$88**

### Video Peaking Coil

Laminated base bracket mtg.

- K10728—Your Cost \$29**

### Low Pass Filter Choke

Keeps I.F. out of Video Amplifier.

- K10729—Your Cost \$29**

## MEISSNER TELEVISION BOOK

An instructive and entertaining Manual on this interesting art.

- K19742—YOUR COST \$25**

## CO-AXIAL CABLE

WE CAN FURNISH ALL TYPES OF CO-AXIAL CABLE IN LEAD COVERED, SYNTHETIC RESIN COVERED, VULCANIZED RUBBER COVERED, STEEL TAPE COVERED, AND COPPER TUBE TYPES. ALSO ALL TYPES OF TRANSMISSION LINE FITTINGS INCLUDING GAS-FILLED LINES AND NITROGEN KEYS FOR SAME.

AMONG THE FAMOUS MAKERS WHOSE PRODUCTS WE CARRY ARE:

- AMPHENOL.  
 BELDEN.  
 COMMUNICATIONS PRODUCTS  
 TELCON, etc.

WRITE FOR QUOTATIONS AND DESCRIPTIONS.

## "Video" Littlefuses

Vacuum enclosed, low current, high voltage fuses. For protecting television equipment against failures due to loss of bias, insulation break-down, shorts, etc. Also used for protection against lethal shock. For this purpose one size from 1/200 ampere and less. Will break up to 15,000 volts peak. All are 1½"x¾".

Stock No.	Amps.	Stock No.	Amps.
K12333	1/1000	K12336	1/100
K12334	1/500	K12337	1/50
K12335	1/200	K12338	1/18

- Your Cost Each, Any Type \$29**

## SPRAGUE Television Condensers

Round aluminum can condensers especially designed for use in television receivers and cathode-ray oscillographs. Special molded top with divider between terminals. Screw and lug terminals mounted on porcelain stand-offs. Oil impregnated and oil filled. We are listing below practically every size used for this type of work.

Stock No.	Cap. Mfd.	Wkg. Vlt.	Can Size Inches	Your Cost
K3153	.03	7000	2½"x4¼"	\$3.53
K3154	.06	4000	2½"x3¾"	3.53
K3155	.2	2500	2" x3½"	4.13
K3156	.05	2500	1½"x3½"	3.00
K3157	.03	4000	2½"x2½"	3.24
K3158	.03	7500	2½"x4¼"	5.30
K3159	.05	7500	2½"x5½"	6.88
K3160	.001	7500	1½"x3	3.23
K3161	.06	2000	1½"x3	2.21
K3162	.1	2000	1½"x4	2.40

## JEFFERSON Deflecting Yoke

For use with magnetically deflected picture tubes such as the No. 1800, 1801, 1803 and 1804. Supplies horizontal and vertical deflection when used with the proper output transformers. Designed for high scanning efficiency and freedom from picture distortions and defocusing. Inside diameter fits all standard picture tubes. Dim. O.D.: 2½"x3½". Shpg. wt. 2 lbs.

- K5461—Your Cost \$5.88**

# TELEVISION

## Meissner TELEVISION KIT

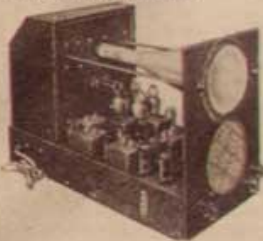
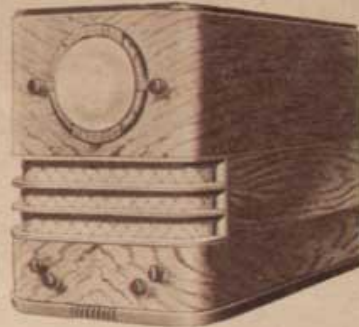
Yes, you certainly can build a highly successful television sight-and-sound receiver yourself at home with only a very few tools. In fact all you will need is a screwdriver, a pair of pliers and a soldering iron. Designed by Meissner, this receiver is unusually successful and provides bright, clear black-and-white pictures that have an amazing wealth of detail. The R.F. circuits are aligned at the factory and aligning for sensitivity and band width is easily done with instruments available at any radio repair shop.

### AN EXCELLENT WAY TO LEARN ABOUT TELEVISION

Assembling one of these kits is an excellent way to learn about this fascinating art. Wide-awake servicemen and students will quickly realize how valuable such experience is and how much prestige they will gain when they permit their customers to view television on a receiver they built themselves! The set is designed to receive the standard RMA signal (441 lines). It is provided with a switch to tune in both the 44-50 and 50-56 megacycle channels. And space is provided in the switch assembly for the addition of two more coils so that the set can easily and inexpensively be expanded to receive 4 stations.

### SHOCK-PROOF DESIGN FOR SAFETY

Exceptional care has been taken to make this receiver 100% safe—even in the hands of the inexperienced. High voltage leads and components are completely protected by in-circuit safety switches.



### Complete Kit Ready To Assemble

The complete kit includes 17 tubes: 1—1802-P4 5" Videotron, 1—6J5, 4—1852's, 1—6H6, 1—6F6, 2—6N7, 2—6F8G's, 1—1853, 1—6SQ7, 1—6V6, 1—879 and 1—5V4G. All necessary parts, detailed circuit diagrams and instructions are included. Cabinet is available as noted below. The receiver is designed for operation on 110 volts 60 cycles a.c. only.

Shpg. wt. 50 lbs.

K22402—Less Cabinet

Your Cost Complete

Beautiful walnut cabinet especially designed for the Meissner Television Receiver. Overall dimensions are 10 1/2"x14 1/2"x22" Deep. Wt. 22 lbs.

K22403—Your Cost Complete

**\$136.71**

**\$19.60**

### FEATURES

- ★ Black-and-White Reproduction
- ★ Sound and Video in one unit, both operating on super-heterodyne circuit.
- ★ Latest type RCA Videotron with Push-Pull Electrostatic Deflection—prevents "key-stoning", permits perfect focusing at extremities of picture.
- ★ Wide band picture I.F. Channel with permeability tuned coils.
- ★ 14 1/2 Megacycle Trap prevents interference from the sound channel of the adjacent Television Band.
- ★ Video Amplifier using shunt peaking gives maximum gain with flat frequency response up to 2.8 megacycles.
- ★ Licensed under RCA Patents.

## RCA VICTOR TELEVISION

### ★ PARTS AND ACCESSORIES ★

### PARTS FOR RCA 5 INCH ELECTRO-STATIC DEFLECTION KINESCOPE

#### Vertical Transformer

Part #32898—Designed for low frequency blocking-oscillator circuit. Most efficient at 60 cycles. Primary D.C. resistance, 670 ohms Secondary D.C. resistance, 135 ohms Ratio 4.16:1. List \$1.75

K10704—Your Cost **\$1.03**

#### Horizontal Transformer

Part #32899—For high-frequency blocking-oscillator circuits. High efficiency at 13,200 cycles. Primary D.C. resistance, 3.5 ohms Secondary D.C. resistance, 8.56 ohms Ratio 1:2. List \$1.75

K10705—Your Cost **\$1.03**

#### High Voltage Capacitor

Part #33020—.15 mfd. @ 2500 V—.05 mfd. @ 3000 V. with bracket.

K10706—List \$2.65

Your Cost **\$1.56**

#### Low Voltage Reactor

Part #33120—8 henries @ 0.14 amp. D.C. Resistance 315 ohms.

K10707—List \$3.25

Your Cost **\$1.91**

#### Low Voltage Capacitor

Part #33190—2 sections 30 mfd. @ 450 V.; 1 section 10 mfd. @ 150 V.

List \$2.50

K10708—Your Cost **\$1.47**

#### H. V. 4-Prong Socket

Part #33211—Bakelite. Non-dust collecting. List \$1.00

K10709—Your Cost **59c**

#### Coupling Capacitors

K10710—Horizontal Part #33340—.05 mfd. @ 3000 V. List 50c

K10711—Vertical Part #33341—.05 mfd. @ 3000 V.

Each, Either Type **29c**

#### Power Transformer

Part #33390—Prim. 117 V. Secondaries: 660 V. ct @ 140 Ma.; 2240 V. @ 2 Ma.; 6.6 V. @ 3 A.; 6.3 V. @ 6 A.; 5 V. @ 3 A.; 2.5 V. @ 1 1/4 A.; 12.6 V. ct @ 3.82 A.

K10712—List \$13.50

Each **\$7.94**

### Double Di-Pole Antenna

RCA's finest Television antenna for use where reflection is not a problem. It provides excellent reception on any one of the five channels for which RCA Victor Television Receivers are designed (the 44-50, 50-56, 66-72, 78-84 and 84-90 megacycle bands) giving excellent signal strength and noise reduction on each one. The Antenna consists of four rods, a wooden mounting pole, and accessories for convenient location. Numerous other accessories for increasing its height, for making special types of installations, etc., are available. RCA #9871.

K21853—List Price \$7.50

Your Cost as Described



(K21853, K21855, K21856, K21857)

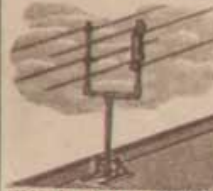
**\$4.41**

### Double Di-Pole Reflector

Reflector designed for use with the above described Double Di-Pole Antenna. Gives improved reception of signals from one direction with rejection of signals from the opposite direction at a ratio of 3:1 on 44-50 and 50-56 Mc. bands. Also increased gain of approx. 50% of signals from the desired direction. Additional accessories listed below.

K21854—List \$13.75

Your Cost (Reflector only) **\$8.09**



(K21853, K21854, K21855, K21856)

### Accessories For Above Antennas

K21855—Mounting bracket—complete (illustrated at bottom of both installations shown above).

Your Cost **\$4.27**

K21856—Galvanized Pipe—6 feet long (lower section of pipe shown in pictures above).

Your Cost **\$1.45**

K21857—Extension Pole Coupler (illustrated and for use only with Double Di-Pole shown at top).

Your Cost **\$1.12**

Write for Prices on Indoor and Outdoor Transmission Cable.

### Double "V" Television Antenna

A popular price antenna for use where reflections are not a problem. Suitable for most suburban areas. For reception of 44-50 and 50-56 Mc. bands. Can be adjusted for other channels. Complete except for poles. Has 90 ft. transmission line.

List \$4.00

K21852—Your Cost **\$2.36**



We can furnish all new RCA Television Products as soon as available at our regular low prices.

### PARTS FOR RCA 9 & 12" MAGNETIC DEFLECTION KINESCOPIES

#### YOKE

Part #9857—Windings for horizontal and vertical deflection circuits.

Coil inductance, Vertical 4.5 MH

Horizontal 1.5 MH

D.C. resistance:

V-45 ohms H-5 ohms

One vertical coil has 5600 ohms resistor to counteract transient waves from horizontal coil.

K10713—Your Cost **\$10.29**

#### H. V. Power Transformer

Part #9861—Prim. 117 V.; Rectifier filament—2.5 V. @ 5 A.; Sec.—7000 V. @ 2 Ma.

K10714—List \$22.50

Your Cost **\$13.23**

#### Horz. Output Transformer

Part #9862—Supplies 13,200 cycle saw-tooth current wave to yoke. Core and coil rubber mounted. D.C. resistance—Prim. 13.2 ohms; Sec.—

832 ohms. Ratio 5.78:1.

K10715—List \$17.50

Your Cost **\$10.29**

#### Vert. Output Transformer

Part #32900—D.C. resistance—Prim.—1122 ohms; Sec.—8 ohms. Ratio 15.95:1. List \$5.50

K10716—Your Cost **\$3.24**

#### Vert. Osc. Transformer

Part #32898—For low frequency circuit. Most efficient at 60 cycles. D.C. resistance—Prim.—670 ohms; Sec.—135 ohms. Ratio 4.16:1.

K10704—List \$1.75

Your Cost **\$1.03**

#### Horz. Osc. Transformer

Part #32899—High efficiency at 13,200 cycles. D.C. resistance—Prim.—3.5 ohms; Sec.—8.55 ohms. Ratio 1:2. List \$1.75

K10705—Your Cost **\$1.03**

#### H. V. Capacitor

Part #33018—.03 mfd. @ 7500 V.

K10717—List \$3.75

Your Cost **\$2.21**