

*Be It Known That*

On \_\_\_\_\_ 1940

*was televised at the*

*General Electric Exhibit*  
**NEW YORK WORLD'S FAIR**

**1940**



## General Electric's "Famous Firsts" in Television History

Modern high-definition television, the result of many years of research, was introduced to the public at the opening of the 1939 New York World's Fair. So popular was its acceptance that it is being featured again in 1940. Some of General Electric's contributions to this new method of communication are listed here:

- 1926—Dr. E. F. W. Alexanderson, G-E engineer, developed a mechanical method of television, using mirrors mounted on a wheel.
- 1927—Experiments using a rotating perforated disk to scan the image proved successful in the General Electric laboratory.
- 1928—January—first public demonstration of television was made in the home of Dr. Alexanderson.

*On January 11, 1928, Dr. Alexanderson held the first public demonstration of television in his home.*



1939—The first long-distance reception of modern high definition television took place in the Helderberg Hills near Schenectady. There, 129 miles from New York City, G-E engineers received pictures of King George and Queen Elizabeth of England touring the New York World's Fair on June 10.

1940—The first television network was put into service on January 12, when the General Electric relay station and television transmitter W2XB began rebroadcasting New York City television programs to the Albany-Schenectady-Troy area.

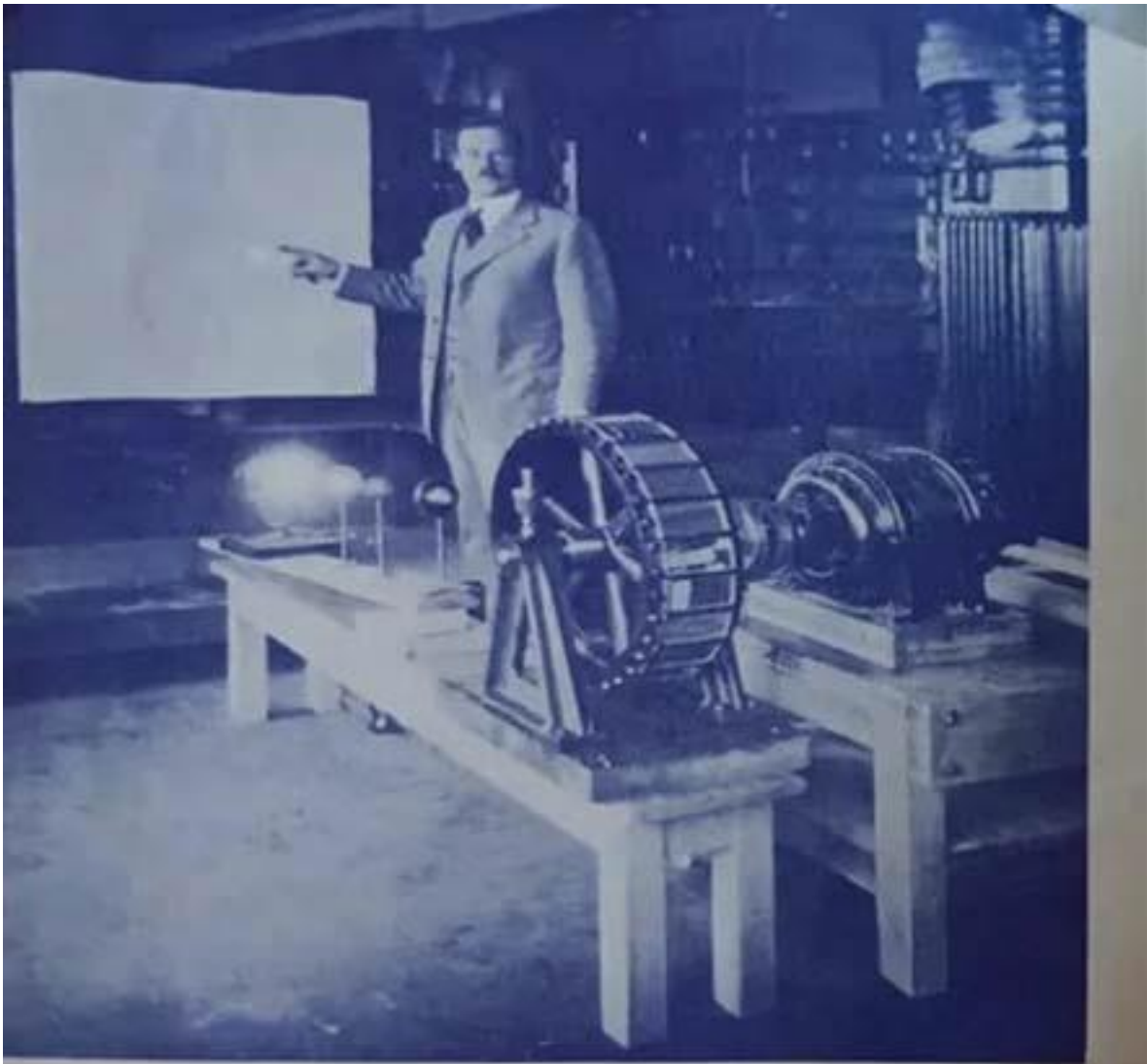
On Easter Sunday G-E engineers established a new record in long-distance reception of a regular television network program. Atop Whiteface Mountain in upper New York State a program was received from New York City, 250 miles away, through the General Electric relay station W2XB.

\* \* \* \* \*

Today General Electric continues its television developments in order to bring the wonders of television to people all over America.

*One hundred twenty-nine miles away they toured the Fair with the Royal Party.*





*General Electric's famous radio and television engineer, Dr. E. F. W. Alexanderson, demonstrating his mechanical television projector in 1926.*

Courtesy of Harry Moore