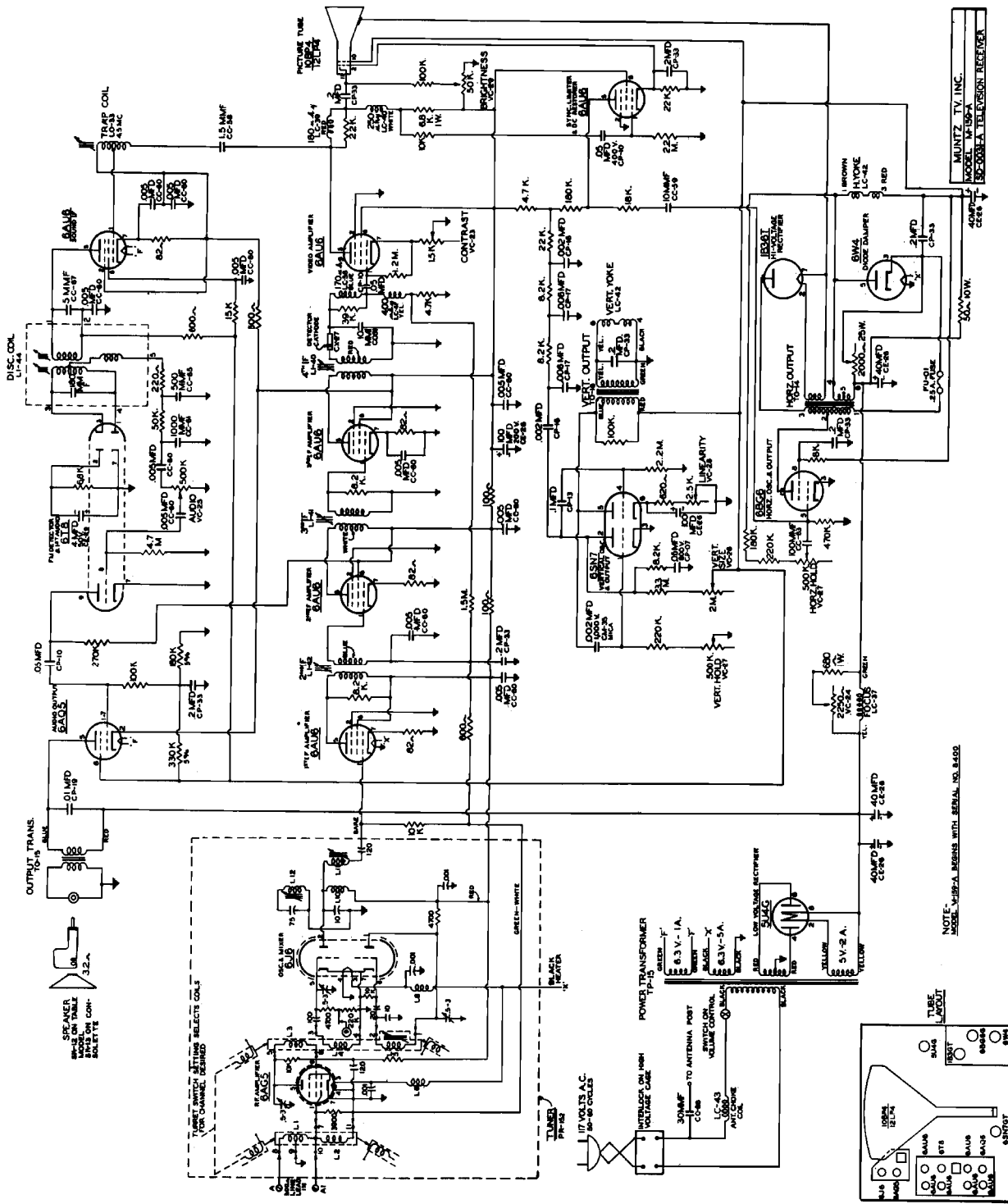
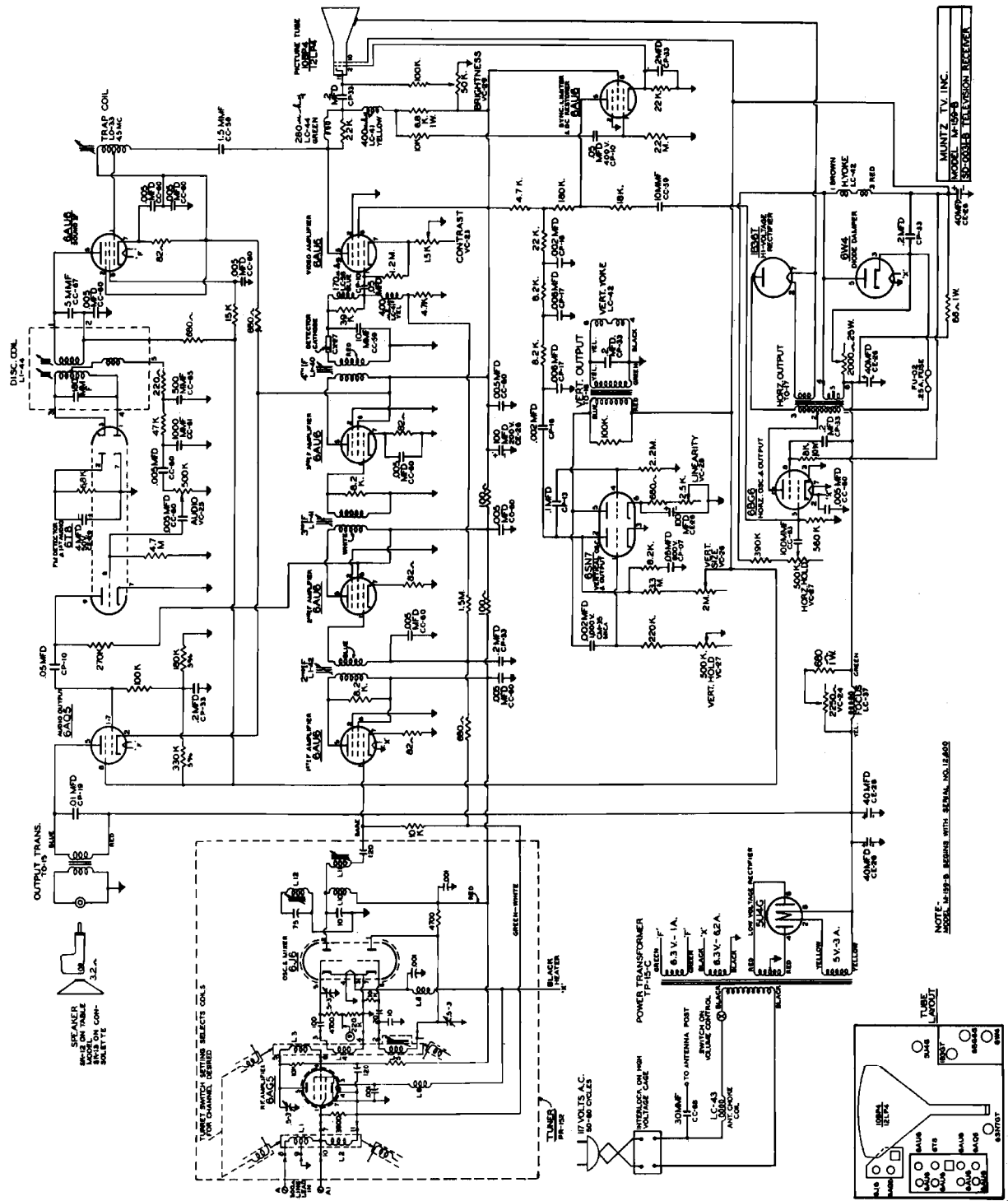


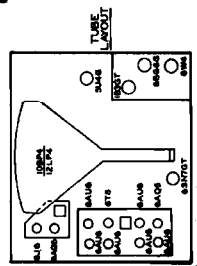
MODELS M-20, M-21, M-22;
Ch. M-159-A



NOTE: MODEL M-159-A BUILDS WITH SERIAL NO. 8400

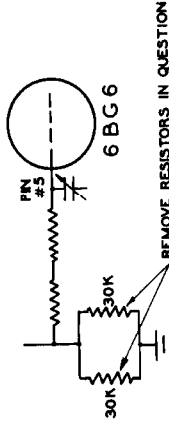


NOTE: USER'S SERVICE WITH SERIAL VOLTAGES

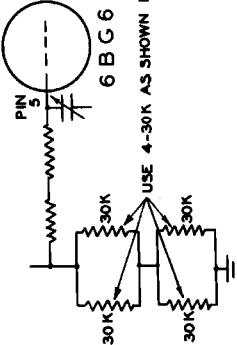


MODEL M-169

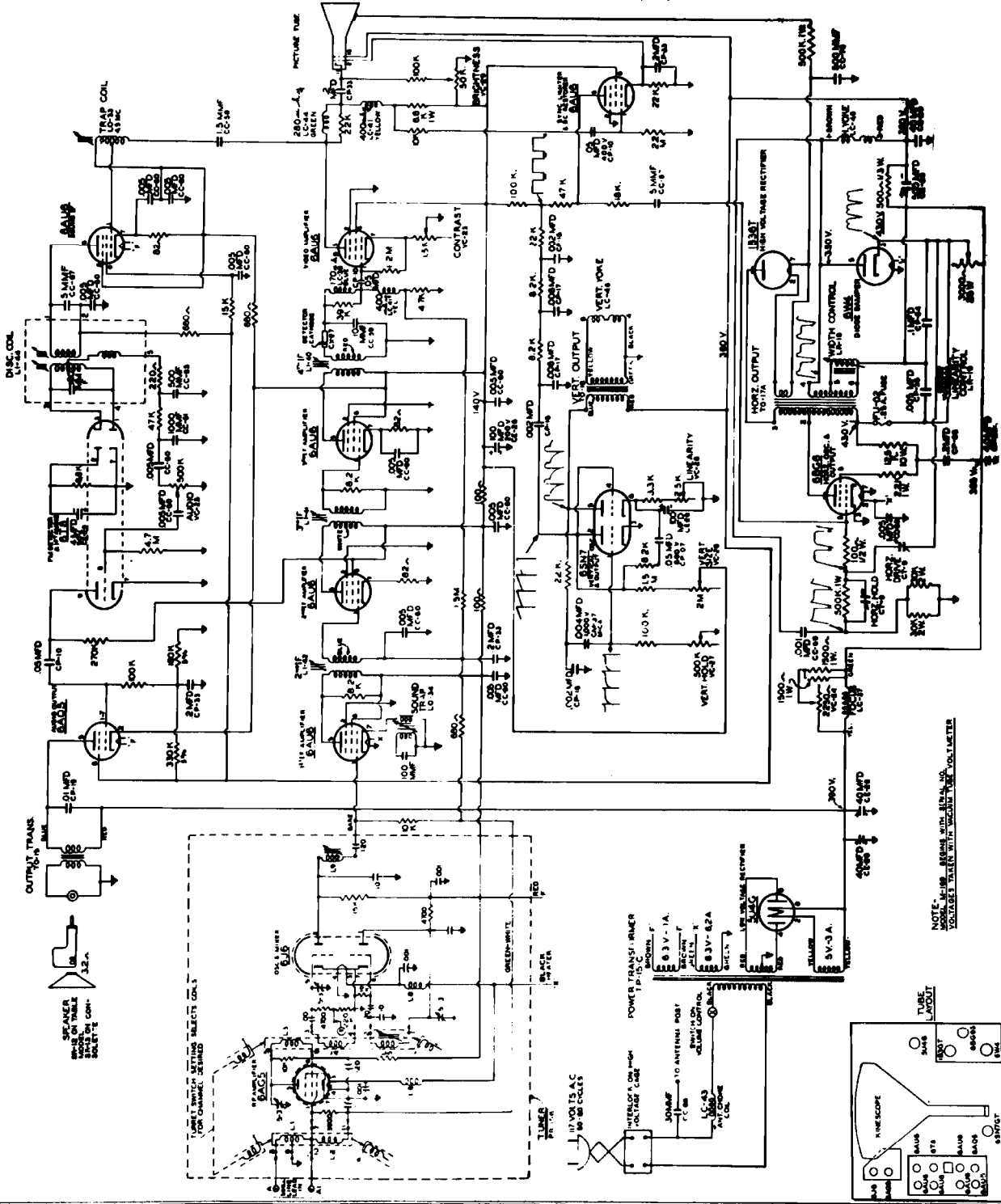
Complaint: Lack of stability in horizontal hold of the picture after 12 to 15 days of use in chassis #169.
Cause: 2-20 K ohm resistors shown in the following diagram lower their value in resistance.



REMEDY WITH PARTS ON HAND



This complaint may appear only in chassis model #169 below the serial #29400 - 10" and 12" tube and below serial #23450 16" tube.



NOTE: MODEL M-169 - SERIES WITH 450V ON VOLTAGE TAVERN WITH SECOND TUBE VOLTMETER

© John F. Rider