



# RCA VICTOR TELEVISION RECEIVERS MODELS TC124, TC125, TC127

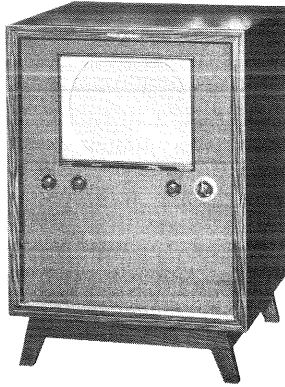
Chassis Nos. KCS 34B

Mfr. No. 274

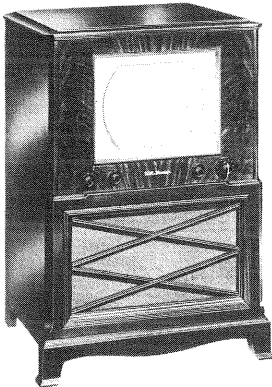
## SERVICE DATA

— 1950 No. T6 —

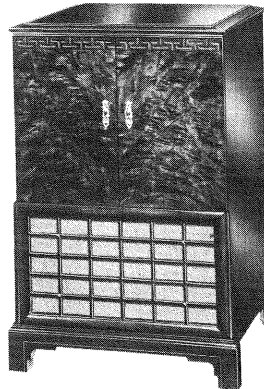
**RADIO CORPORATION OF AMERICA**  
RCA VICTOR DIVISION  
CAMDEN, N. J., U. S. A.



Model TC124  
Walnut,  
Mahogany  
or Oak



Model TC125  
Walnut, Mahogany or Oak



Model TC127  
Walnut, Mahogany or Oak

### GENERAL DESCRIPTION

Models TC124, TC125, and TC127 are twelve and one-half inch television receivers and are electrically identical except for cabinets. The kinescopes are shipped in place in the cabinet. These receivers employ twenty-one tubes plus two rectifiers and a 12LP4 kinescope.

Features of the television unit are full twelve channel coverage; FM sound system; improved picture brilliance; picture A-G-C; A-F-C horizontal hold; stabilized vertical hold; two stages of video amplification; noise saturation circuits; improved sync separator and clipper; four mc. band width for picture channel and reduced hazard high voltage supply. An auxiliary audio input jack is provided to permit the use of an external record playing attachment.

### ELECTRICAL AND MECHANICAL SPECIFICATIONS

PICTURE SIZE .....87 square inches on a 12LP4 Kinescope

**TELEVISION R-F FREQUENCY RANGE**  
All 12 television channels, 54 mc. to 88 mc., 174 mc. to 216 mc.  
Fine Tuning Range..±250 kc. on chan. 2, ±650 kc. on chan. 13  
Picture Carrier Frequency .....25.75 mc.  
Sound Carrier Frequency .....21.25 mc.

**VIDEO RESPONSE** .....To 4 mc.

**SWEEP DEFLECTION** .....Magnetic

**FOCUS** .....Magnetic

**POWER SUPPLY RATING** .....115 volts, 60 cycles, 230 watts

**AUDIO POWER OUTPUT RATING** .....2.6 watts max.

**LOUDSPEAKERS**—92569-7 .....12" PM Dynamic, 3.2 ohms

**CHASSIS DESIGNATION** .....KCS34B

DIMENSIONS (inches)	Width	Height	Depth
Cabinet (outside) TC124 .....	22 <sup>7</sup> / <sub>8</sub>	33 <sup>1</sup> / <sub>4</sub>	20 <sup>1</sup> / <sub>2</sub>
Cabinet (outside) TC125 .....	25 <sup>1</sup> / <sub>4</sub>	36 <sup>1</sup> / <sub>4</sub>	21 <sup>1</sup> / <sub>4</sub>
Cabinet (outside) TC127 .....	25 <sup>3</sup> / <sub>8</sub>	36 <sup>1</sup> / <sub>2</sub>	22 <sup>5</sup> / <sub>8</sub>
Chassis Assembly (overall) .....	19 <sup>1</sup> / <sub>2</sub>	14	20

**WEIGHT**

Chassis with Tubes in Cabinet	}	TC124 .....	103 lbs.
		TC125 .....	100 lbs.
		TC127 .....	110 lbs.
Shipping Weight	}	TC124 .....	125 lbs.
		TC125 .....	122 lbs.
		TC127 .....	133 lbs.

The chassis used in Models TC124, TC125 and TC127 are identical to the chassis used in Models T120 and T121 except for the addition of a jewel lamp. The service data for Models T120 and T121 will apply to Models TC124, TC125 and TC127 except as noted above, the speaker and miscellaneous parts as listed on the following page.